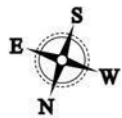
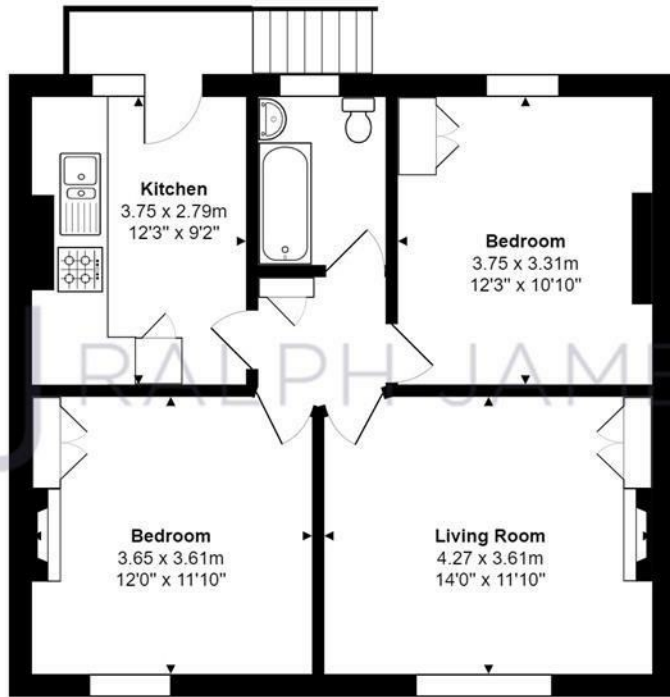


St. Johns Road  
Redhill  
Surrey  
£325,000



RALPH JAMES

# FLOOR PLANS



## First Floor Maisonette

St Johns Road, Redhill

Total Area: 60.7 m<sup>2</sup> ... 654 ft<sup>2</sup>

FOR ILLUSTRATIVE PURPOSES ONLY.

Whilst every attempt has been made to ensure the accuracy of the floor plan shown, all measurements, positioning, fixtures, features, fittings and any other data shown are an approximate interpretation for illustrative purposes only and are not to scale.

No responsibility is taken for any error, omission, miss-statement or use of data shown.

The above statement applies to both 'Still Moving London LTD' and the Company or individual displaying this floor plan.

Unauthorised reproduction prohibited.

© Still Moving London LTD (www.stillmoving.london)

RALPH JAMES



## IN A NUTSHELL



Private garden



Two double bedrooms



Large bright and airy lounge



Family bathroom



Modern separate kitchen/  
breakfast room



Allocated Parking





# WHAT'S GREAT?

St Johns is a popular road with a pretty array of homes where this first floor maisonette can be found. It's light décor, high ceilings and large windows give a spacious and modern feel and allows you to move in without much fuss.

Heading up the stairs and in through your private entrance you come into the kitchen which has a contemporary feel mixed with a rustic touch combining white metro tiles with pebble grey cupboards and a stable door.

The living/dining room allows plenty of room for a sizable table along with a couple of comfortable sofas creating a cosy and welcoming space. Whilst benefitting from a built-in cupboard and a gorgeous original fireplace, perfect for those cooler evenings.

There are two generously sized double bedrooms which have incorporated wardrobes and the master also has a stunning feature fireplace.

The location is great for those who commute often, with both Earlswood and Redhill stations offering links into the city. You have local shops where you can grab the essentials just down the road or you can pop into Redhill town where there is a large Sainsburys, along with plenty of shops, cafes and a new Gym.







Ashley likes it  
because....

"This is a great home for first time buyers or potential investors, the location offers you some great transport links and if you fancy an evening out Reigate Town is a quick cab ride away."

## SELLER'S SECRET

"We've loved living here. The building has real character, and the garden is spacious and gets lots of sun in the summer. The view is lovely from the stable door - perfect for watching the sun rise every morning. In the winter we use the living room fireplace, so cosy around Christmas time."

Earlswood is such a nice location - pretty surroundings, the close community through which we've made many close friends, beautiful Earlswood Common, fast train link into London, even the local shop Holborn's is a much loved place.

Seeing our family grow here has been amazing. It's time for us to move on to the next chapter, but we really hope someone loves it as much as we have."

## CLOSE TO HOME

Earlswood train station 0.4m

Redhill train station 0.7m

Reigate High Street 1.6m

Redhill Memorial Park 0.8m

East Surrey hospital 1.5m

The Home Cottage 0.7m

St. Johns Church 0.4m

Gatwick Airport 7.4m



To buy or not to buy...

RALPH JAMES



39 High Street | Redhill | RH1 1RX | 01737 765555  
admin@ralphjames.co.uk | www.ralphjames.co.uk